



Screwdriving Technology

Automation

Air Motors

Air Tools



Straight Grinders

Vane Motor

Power Output: 1,2 - 2,8 kW (1.6 -3.8 HP)

- optimum power-to-weight ratio
- robust
- highly durable
- simple operation
- ergonomic

Our air straight grinders are used with flat/cutting-off/tapered grinding disks, wherever heavy-duty fabrication is required on steel and castings or when deburring welding-, casting-, and ridge-seams. It has never been easier to perform smooth or coarse grinding of steel & cast iron in foundries, or when polishing welding seams or when fabricating casted parts.

Our straight grinders can also be used with steel brushes for the removal of rust or when descaling rolled steel and forgings.



THE BEST TOOLS FOR EFFICIENT MATERIAL REMOVAL

Optimum power-to-weight ratio

Straight grinders are characterized with keeping the speed of the tool constant, even if tool is operated at maximum. Motor construction uses modern materials and production technology to achieve power maximum of 2,8 kW. Power output of the Turbine Grinder: The already high power-to-weight ratio of our standard air-grinders is surpassed by our grinders equipped with turbine motors.

Robust

Our robust straight grinders are designed for the using in heavy-duty fabrication (foundries, quarries, buildings, engineering).

Highly durable

The robust design of the straight grinders assures a long life span - even when the tool is under continued operation.

Simple operation

Our Grinders are reliable and assure a simple operation and ease of maintenance. The straight grinders operate at an extreme low noise-level. The ergonomic design of the tool-grip reduces the machine's vibration.

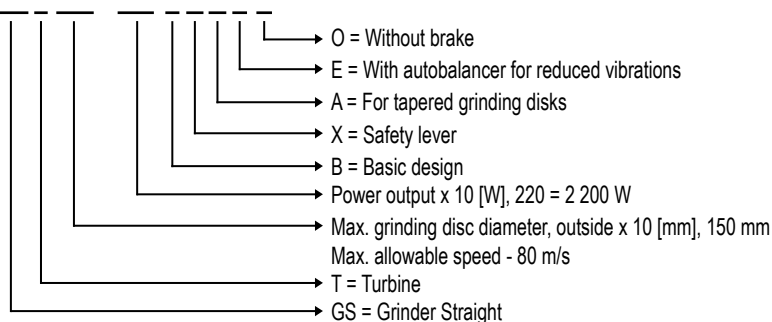
Oil-free operation

For an oil-free operation, we offer our special line of turbine grinders.



TYPE KEY

GS T 815 - 220 B X A E O

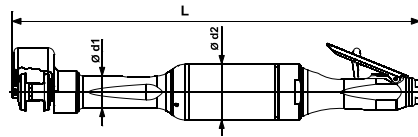


SPECIFICATIONS - STRAIGHT GRINDERS WITH VANE MOTORS

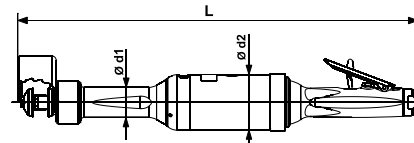
Straight grinders with vane motor

- for the fabrications on steel, for the deburring of welding-, casting-, and ridge-seams (with grinding disks)

- for the removal of rust, the descaling of rolled steel and forgings (with steel brushes)



GS 508-120BXA



GS 510-230BX

For flat grinding disks	Model Part No.	GS508-120BX 6061228A	GS510-230BX 6061289A
For tapered grinding disks	Model Part No.	GS508-120BXA 6061228B	-
Speed (no load)	min ⁻¹ (rpm)	12 000	9 500
Max. power output	kW (hp)	1,2 (1.61)	2,3 (3.08)
Air consumption (loaded)	m ³ /min (cfm)	1,2 (42.37)	2,2 (77.68)
Air consumption (no load)	m ³ /min (cfm)	0,65 (22.96)	0,7 (24.72)
I.D. of air inlet hose	mm (in)	13 (.51)	16 (.63)
Grinding disk-Ø outside	mm (in)	80 (3")	100 (4")
Grinding disk-Ø inside	mm (in)	20 (.79)	20 (.79)
Grinding disk - clamping range	mm (in)	20÷25 (.79÷.98)	20÷25 (.79÷.98)
Max. allowable speed	m/s (ft/s)	50 (164)	50 (164)
Grinder-Ø d1/d2	mm (in)	36/62 (1.42/2.44)	39/72 (1.54/2.83)
Grinder length L	mm (in)	453 (17.83)	520 (20.47)
Air connection		thread 3/8" female	thread 1/2" female
Weight	kg (lbs)	2,6 (5.73)	4,0 (8.82)

Specifications at 90 psi (6,3 bar)

* With Autobalancer for reduced vibrations

Standard Equipment:	Part Number	
Allen key 2 mm	800443	800443
Allen key 5 mm	800448	-
Allen key 6 mm	800449	800449
Hose nozzle G1/2"-13 mm	6013772	6013772

Optional Accessories:	Part Number	
Plug 27SF AK17 SXN	6074950	-
Plug 27SF AK21 SXN	6072227	6072227
Hose nozzle, turn-able G1/2"	-	6021377
Hose nozzle, turn-able G3/8"	6022433A	-
O ring	6070103	-
Swivel connector G3/8"	816376	-
Swivel connector G1/2"	-	6078628
Hose set (hose LW 13 mm, length 4 m)	-	315130A

Optional Accessories:

Swivel connector G1/2"
Part No. 6078628

The swivel is an ingenious multi-directional connector. Connect your tool and the hose will stay in ideal position however much you and the tool move around. It takes the effort out of working in those cramped spaces. The hose feels almost weightless and it reduces hose wear.



Set - hose 4 m, connection
Part No. 315130A

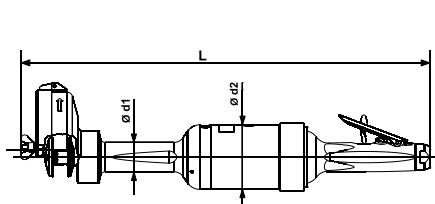


SPECIFICATIONS - STRAIGHT GRINDERS WITH VANE MOTORS

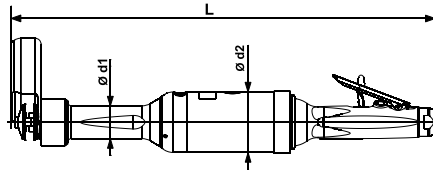
Straight grinders with vane motor

- for the fabrications on steel, for the deburring of welding-, casting-, and ridge-seams (with grinding disks)

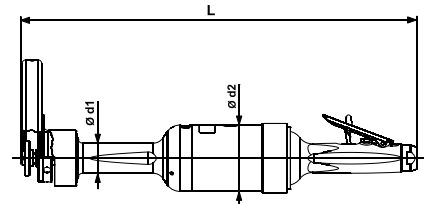
- for the removal of rust, the descaling of rolled steel and forgings (with steel brushes)



GS 515-280BX



GS 818-210BX



GS 823-280BXE

For flat grinding disks	Model Part No.	GS315-240BX 6061141A	GS515-280BX 6061301A	-	-
For cutting-off disks	Model Part No.	-	-	GS818-210BX 6061296A	-
For cutting-off disks, with Autobalancer*	Model Part No.	-	-	GS818-210BXE* 6061296B	GS823-280BXE* 6061307B
Speed (no load)	min ⁻¹ (rpm)	4 000	6 400	8 500	6 600
Max. power output	kW (hp)	2,4 (3.22)	2,8 (3.75)	2,1 (2.81)	2,8 (3.75)
Air consumption (loaded)	m ³ /min (cfm)	1,9 (67.09)	2,4 (84.75)	2,1 (74.2)	2,4 (84.75)
Air consumption (no load)	m ³ /min (cfm)	0,7 (24.72)	0,8 (28.25)	0,65 (23.0)	0,8 (28.25)
I.D. of air inlet hose	mm (in)	16 (.63)	16 (.63)	16 (.63)	16 (.63)
Grinding disk-Ø outside	mm (in)	150 (6")	150 (6")	180 (7")	230 (9")
Grinding disk-Ø inside	mm (in)	20 (.79)	20 (.79)	22,23 (.84)	22,23 (.84)
Grinding disk - clamping range	mm (in)	20÷25 (.79÷.98)	20÷25 (.79÷.98)	8÷10 (.31÷.39)	2,5÷10 (.1÷.39)
Max. allowable speed	m/s (ft/s)	32 (105)	50 (164)	80 (262.5)	80 (262.5)
Grinder-Ø d1/d2	mm (in)	39/86 (1.54/3.39)	39/86 (1.54/3.39)	39/72 (1.54/2.83)	39/86 (1.54/3.39)
Grinder length L	mm (in)	564 (22.20)	545 (21.46)	506 (19.92) 511 (20.12)	513 (20.20)
Air connection		thread 1/2" female	thread 1/2" female	thread 1/2" female	thread 1/2" female
Weight	kg (lbs)	6,5 (14.33)	5,4 (11.90)	4,0 (8.82) 4,25 (9.37)	5,5 (12.13)

Specifications at 90 psi (6,3 bar)

* With Autobalancer for reduced vibrations

Standard Equipment:	Part Number			
Allen key 2 mm	-	800443	800443	800443
Allen key 4 mm (for design E, with autobalancer)	-	-	800447	800447
Allen key 6 mm	800449	800449	800449	800449
Hose nozzle G1/2"	6013767	6013767	6013767	6013767
O ring	802517	802517	802517	802517
T wrench (for design E, with autobalancer)	-	-	828832	828832

Optional Accessories:	Part Number			
Swivel connector G1/2"	6078628	6078628	6078628	6078628
Nipple	6072227	6072227	6072227	6072227
Hose nozzle G1/2"	6021377	6021377	6021377	6021377
Hose set (hose LW 13 mm, length 4 m)	315130A	315130A	315130A	315130A

Optional Accessories:

Swivel connector G1/2"
Part No. 6078628

The swivel is an ingenious multi-directional connector. Connect your tool and the hose will stay in ideal position however much you and the tool move around. It takes the effort out of working in those cramped spaces. The hose feels almost weightless and it reduces hose wear.



Set - hose 4 m, connection
Part No. 315130A



DEPRAG
machines unlimited



DEPRAG CZ a.s., T. G. Masaryka 113, 507 81 Lázně Bělohrad - Czech Republic
Tel.: +420-493 771 511, Fax: +420-493 771 623, E-mail: sales@deprag.cz, Internet: www.deprag.cz

Specifications subject to change without prior notice